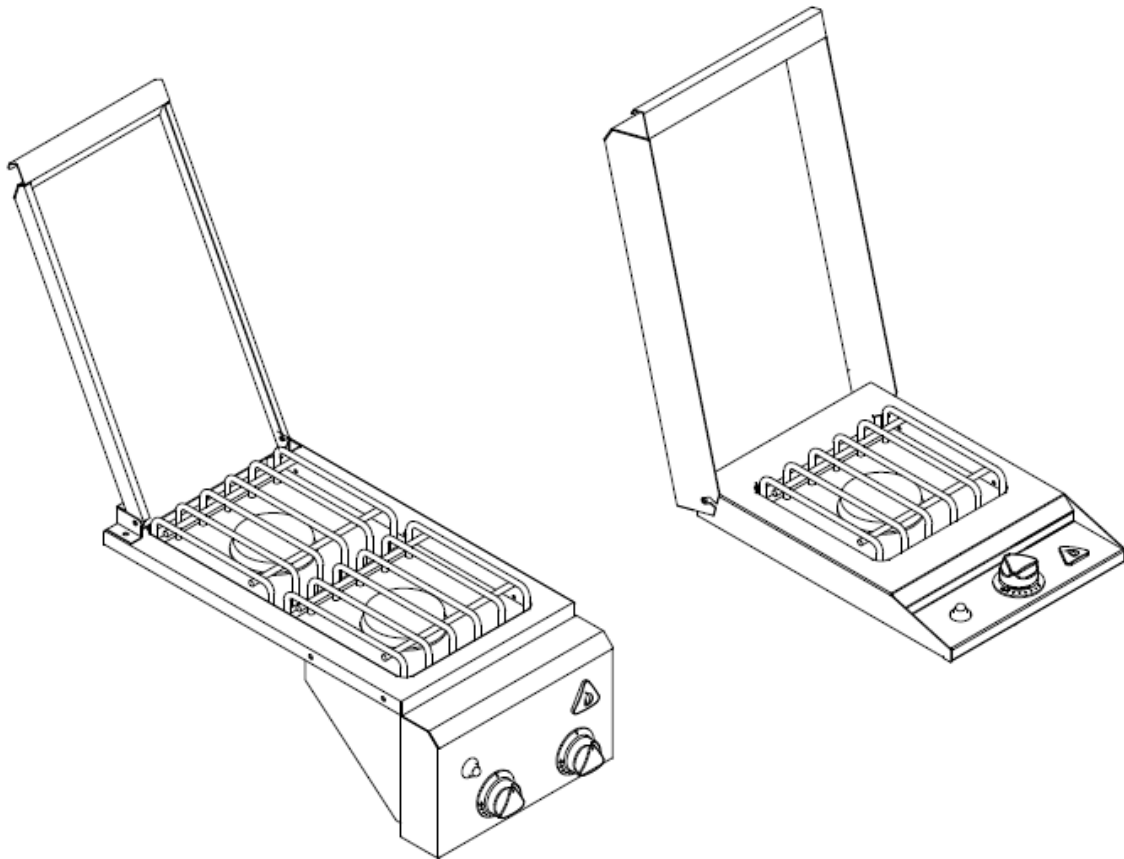




# DELTA HEAT SIDE BURNER

## USE & CARE MANUAL



MODEL: DHSB1D  
DHSD2

# FOR YOUR RECORDS

**IMPORTANT:** Retain original proof of purchase to establish warranty period.

Please record the following information and refer to this information when contacting the company or an authorized service agent. This information is found on the rating/ data plate located on the inside back of the unit.

Model #: \_\_\_\_\_

Serial #: \_\_\_\_\_

Date of Purchase: \_\_\_\_\_

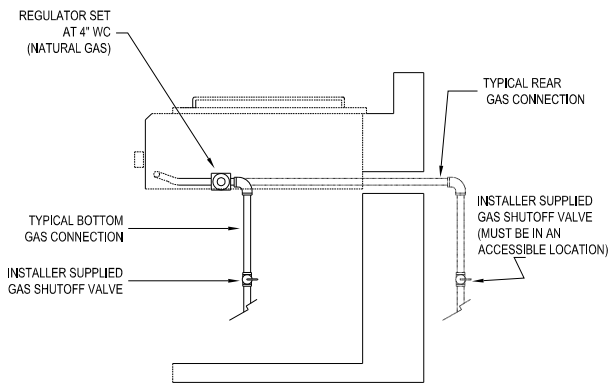
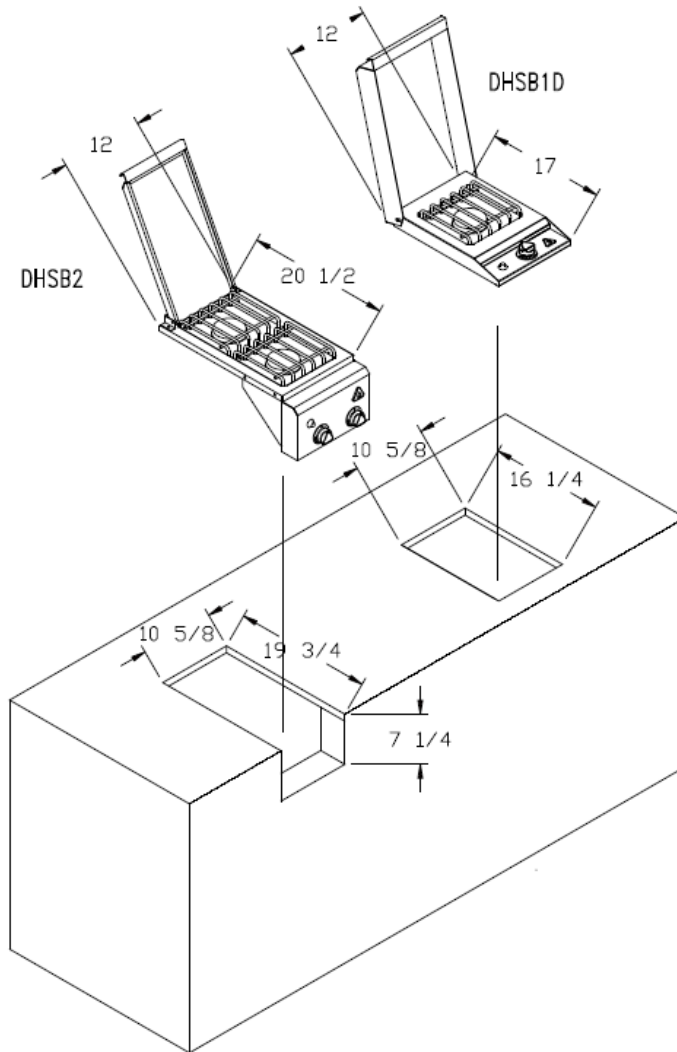
Place of Purchase: \_\_\_\_\_

Type of Gas:       NG                       LP

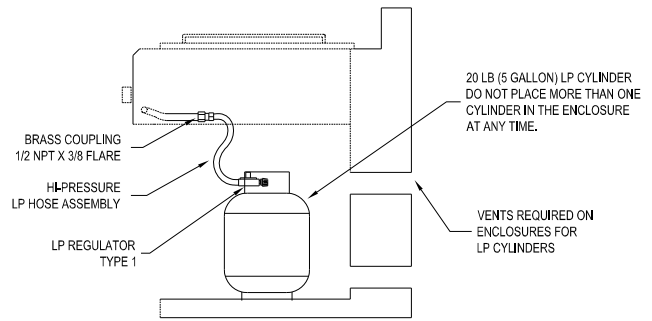
## OPERATING INSTRUCTIONS – SIDE BURNERS

1. Make sure all knobs are in the “OFF” position.
2. Turn “on” the gas at source. Caution: If you smell gas, shut off gas supply and call for service.
3. Before lighting, remove the side burner cover or any cooking utensils from the burner grate.
4. Push and turn the burner knob counterclockwise to “HI” (LARGE FLAME) position.
5. Push-in and hold the ignition button. You should hear a continuous clicking sound and see sparks being provided to the burner. (If clicking sound is weak, replace battery).
6. If the burner does not ignite within 5 seconds, turn the burner to “OFF” and wait for five minutes. Repeat the above procedures or try the following manual lighting procedures
  - a. Hold a lit match next to the burner ports
  - b. Push and turn the burner knob counterclockwise to ignite the burner.
7. Adjust flame setting to “LOW” or “MEDIUM” or “HIGH”, if desired.
- 8. Caution: Do not leave the side burner unattended while cooking.**
9. To shutdown the burner, push and turn the burner knob clockwise to “OFF”.
10. For complete shutdown, turn “off” the gas at source.

# CABINET CUT-OUT DIMENSIONS FOR BUILT-IN APPLICATION

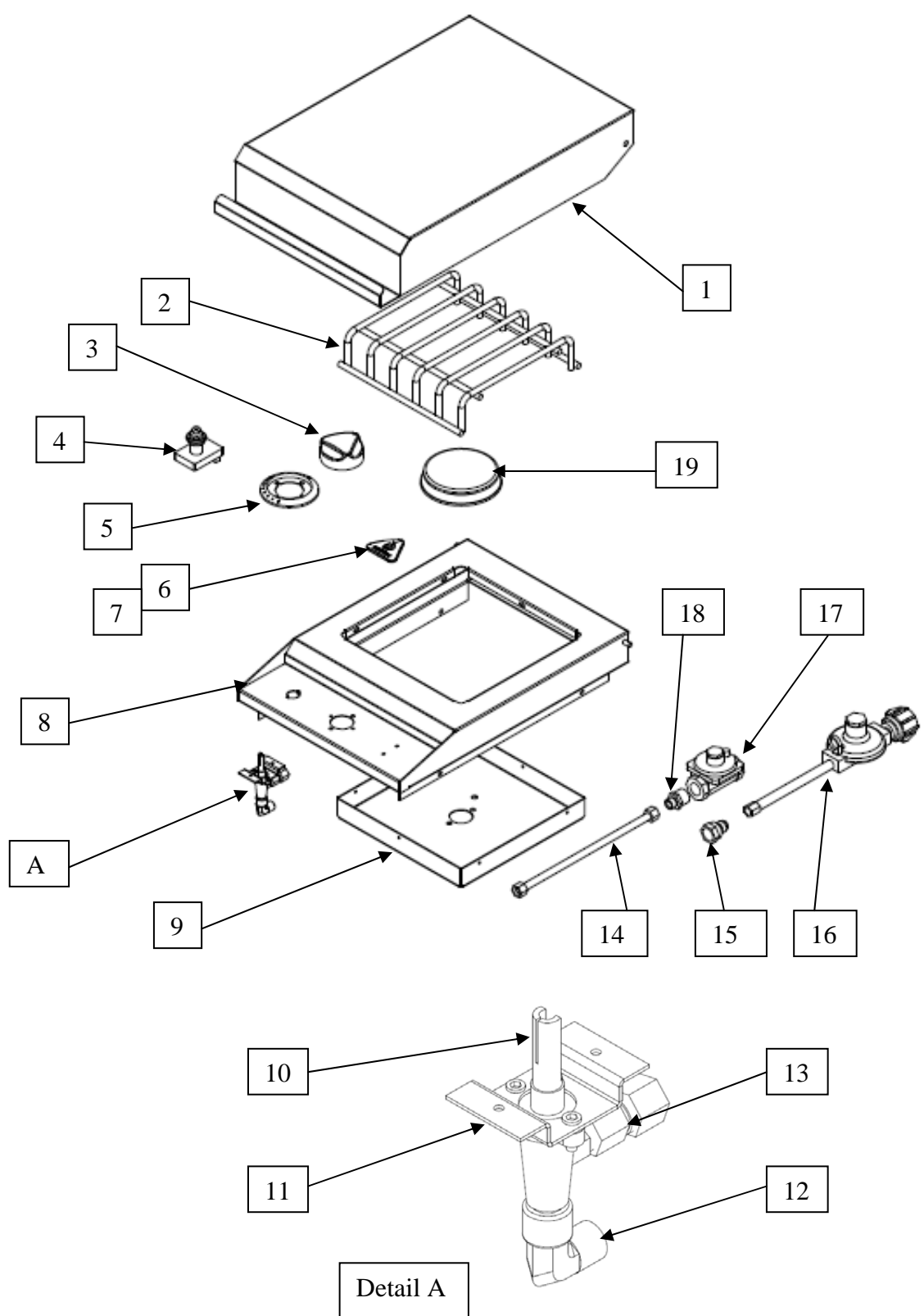


TYPICAL NATURAL GAS HOOK UP  
(Model: DHSB2N ; DHSB1DN)



TYPICAL BOTTLE LP GAS HOOK UP  
(Model: DHSB2L ; DHSB1DL)

# EXPLODED VIEW – SIDE BURNER DROP-IN (DHSB1D)

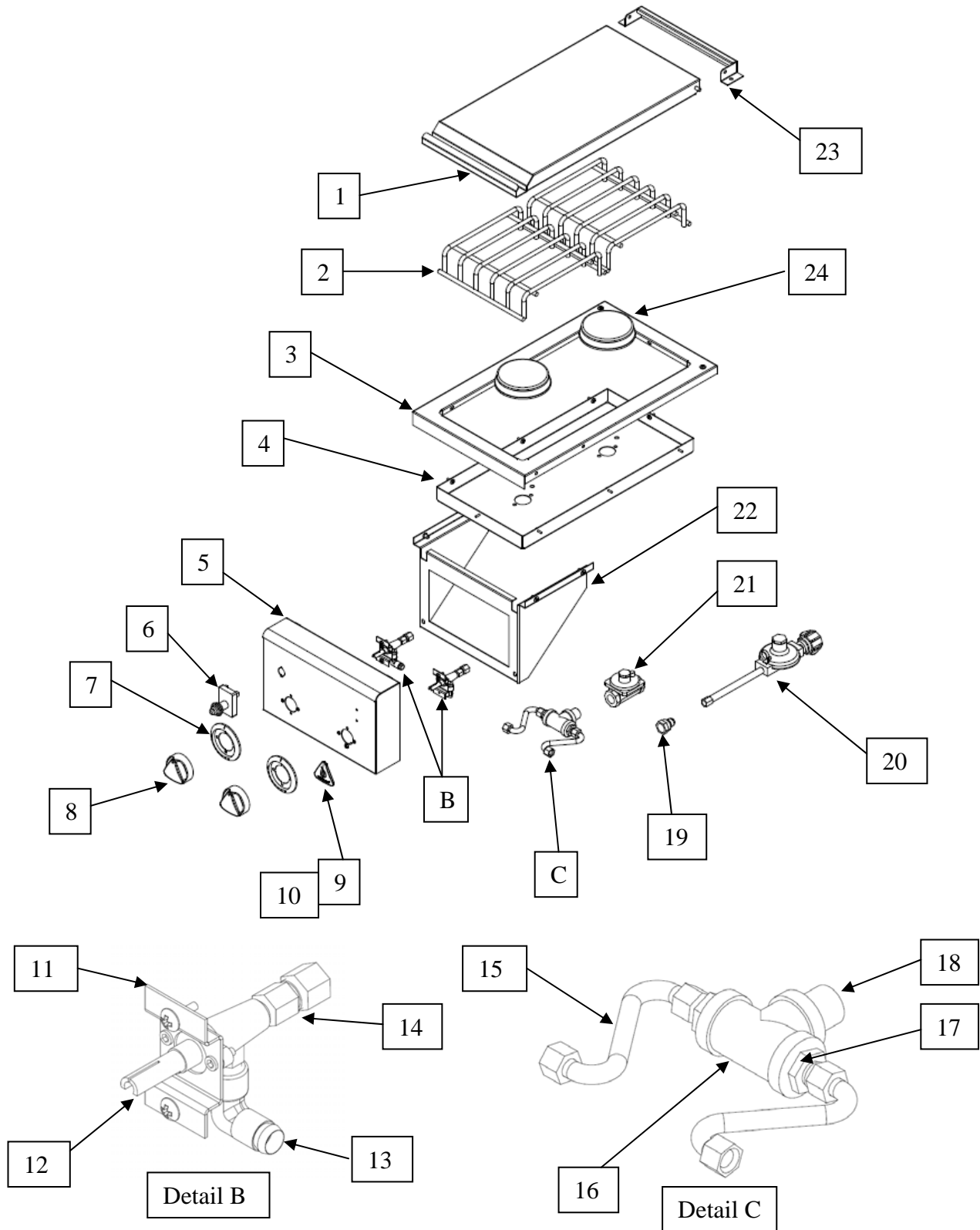


## SERVICE PARTS LIST – SIDE BURNER DROP-IN (DHSB1D)

Item No.	Service Part Number	Description	DHSB1DL	DHSB1DN
1	S21847	Side Burner Cover	1	1
2	S13843	Side Burner Grate	1	1
3	S13162	Delta Knob	1	1
4	S16157	2-Spark Ignition Module	1	1
5	S13165	Delta Knob Bezel	1	1
6	S13141	Delta Heat Logo	1	1
7	S14160	Tinnerman Barrel Clip	2	2
8	S21846	Cooktop Body	1	1
9	S21841-1	1-Burner Burner Holder	1	1
10	S15106	Straight Gas Valve	1	1
11	S21855	Valve Mount	1	1
12	S12601	Brass Elbow, 3/8 CC x 1/8 FIP	1	1
13	S12609	Brass Nut and Sleeve, 1/8 FIP x 5/16 CC	1	1
14	S12407	Stainless Steel Flex Tubing, 3/8 x 7.5"	1	1
15	S12602	Brass Coupling, 3/8 Flare x 1/2 FIP	1	
16	S15302	LP Regulator	1	
17	S15303	NG Regulator		1
18	S12641	Brass Coupling, 3/8 CC x 1/2 MPT	1	1
19	S13336	Burner Assembly	1	1
*	S13340	Orifice, NG		1
*	S13341	Orifice, LP	1	

\* Not Shown

# EXPLODED VIEW – 2-BURNER SIDE BURNER, BUILT-IN (DHSB2)



## SERVICE PARTS LIST – 2-BURNER SIDE BURNER, BUILT-IN (DHSB2)

Item No.	Service Part Number	Description	DHSB2-L	DHSB2-N
1	S21844	Side Burner Cover	1	1
2	S13843	Side Burner Grate	2	2
3	S21842-2	2-Burner Cooktop	1	1
4	S21841-2	2-Burner Burner Holder	1	1
5	S22077	Front Panel, 2-Burner	1	1
6	S16157	2-Spark Ignition Module	1	1
7	S13165	Delta Knob Bezel	2	2
8	S13162	Delta Knob Bezel	2	2
9	S13141	Delta Heat Logo	1	1
10	S14160	Tinnerman Barrel Clip	2	2
11	S21855	Valve Mount	2	2
12	S15106	Straight Gas Valve	2	2
13	S12601	Brass Elbow, 3/8 CC x 1/8 FIP	2	2
14	S12609	Brass Nut and Sleeve, 1/8 FIP x 5/16 CC	2	2
15	S12407	Stainless Steel Flex Tubing, 3/8 x 7.5"	2	2
16	S12617	Tee, 1/2 x 1/2 x 1/2 Bl	1	1
17	S12641	Brass Coupling, 3/8 CC x 1/2 MPT	2	2
18	S12618	1/2 Close BL Nipple	1	1
19	S12602	Brass Coupling, 3/8 Flare x 1/2 FIP	1	
20	S15302	LP Regulator	1	
21	S15303	NG Regulator		1
22	S21845	Stiffener	1	1
23	S21849	Side Burner Cover Brace	1	1
24	S13336	Burner Assembly	2	2
*	S13340	Orifice, NG		2
*	S13341	Orifice, LP	2	

\* Not Shown



## DELTA HEAT WARRANTY

**ONE-YEAR FULL WARRANTY:** Delta Heat warrants the outdoor **Side Burners** and all of their component parts, to be free from defects in materials and workmanship under normal residential use for a period of one year from the original date of purchase. Delta Heat will repair or replace, at its option, any part, which fail or is found to be defective during the warranty period, at no cost to the original purchaser. Warranty service must be performed by a Delta Heat authorized representative during normal business hours.

### WARRANTY LIMITATIONS & EXCLUSIONS

This warranty shall apply only to the products purchased and located in the continental United States and Canada. The warranty coverage begins on the original date of purchase and proof of date of purchase is required. In order to activate the warranty, we require that you send in the attached warranty registration card or register on-line at our website, [www.deltaheat.com](http://www.deltaheat.com). This warranty applies only to the original owner and may not be transferred.

This warranty does not apply to damages resulting from negligence, alteration, misuse, abuse, accident, natural disaster, loss of electrical power to the product for any reason, improper installation or improper operation, unauthorized adjustments or calibrations, dings, dents, scratches, or damages due to harsh cleaning chemicals. This warranty does not apply to rust, corrosion, discoloration, surface scratches, weather and atmospheric related staining and oxidation which are normal conditions and to be expected with any outdoor products unless the affected component becomes inoperable. This warranty does not apply to commercial use, or to products with altered or removed serial numbers. Delta Heat shall not be liable for incidental, consequential, special or contingent damages resulting from its breach of this written warranty or any implied warranty.

**WARRANTY SERVICE & REPLACEMENT PARTS:** Call your authorized selling dealer or call Delta Heat directly at **800-422-0091**. Be prepared to furnish the following information: Purchaser's name, model and serial number of the appliance, date of purchase and the accurate description of the problem. Delta Heat will not pay for service calls for correcting an installation problem. Owner shall be responsible for proper installation, providing normal care and maintenance, providing proof of purchase upon request and making the appliance accessible for service. In the event of any warranty replacement, all removal, replacement, installation and shipping costs are the responsibility of the grill owner.

Some states do not allow limitations on how long an implied warranty lasts, or the exclusions of or limitations on consequential damages. This warranty gives you specific legal rights and you may have other rights, which vary from state to state.